

1996 Porsche 911 GT1

1. Front Tow Hook replaces Tamiya part A13. Paint Tamiya clear red.
2. Fuel Fillers. Place on body work front hood below windshield.
3. Oil Tank Cap either place on top of Tamiya part B6 or replaces B6.
4. Mirrors replace Tamiya part B24.
5. Passenger Electrical Box. See Insert # 3.
6. Wing Endplates replaces C5 and C6.
7. Front Hood Fasteners.
8. Radiator Grill placed on part A24 right side (tow hook side).
9. Radiator Grill placed on part A24 left side.
10. Radiator Grill placed on part C18.
10. You have 2 number 10's . This one, the gear lever escutcheon plate, goes on firewall where gear lever passes through part A23.
11. Door Light Plates.
12. Wickerbill.
13. Engine Badges
14. Passenger's Side Floor Framework. See Insert # 3.
15. Driver's Side Floor Framework. See Insert # 3.
16. Driver's Side Floor Framework. See Insert # 3.
17. Headlight Rings, place on part D4.
18. Rear Shock End Caps only for use with Scale Motorsport Turned Metal Package sku# 9112.
19. Hub Rings place on parts A6 and A7.
20. Kill Switch, place on front hood by windshield. Paint Tamiya clear red.
21. Dashboard detail on part A15.
22. Drink Cup Holder. See Insert # 3.
23. Rear Bodywork Mounting Clips, replaces A18.
24. Hood Emblem.
25. Passenger-Side Dash-mounted ID Plate replaces Tamiya part C1.
26. Digital Sign Marker, passenger door window.
27. Wheel Locks.
28. Hood Pins.
29. Hood Fastening Plates.
30. Left Foot Pedal place on part C7.
31. Right Foot Pedal place on part C7.
32. Bodywork Clips.

Scale Motorsport

3 Topside Lane
Newtown, CT 06470-2023

Phone: 203.426.9686
Fax: 203.426.1397
Email: scalemotor@aol.com
www.scalemotorsport.com
©Scale Motorsport 1999



This kit is not a toy, it is designed for the advanced builder or intermediate modeller interested in learning new techniques while expanding their modelling skills. Not safe for children under the age of 12 years.

Porsche, The Porsche Shield And The Distinctive Design of Porsche Cars Are Trademarks And Trade Dress of Porsche AG. Permission Granted

Production Notes:

Not all photo-etch products are created equal. Scale Motorsport photo-etch sheets are double etched from nickel-plated steel. In order to accomplish double etching, artwork and tooling costs double in time and expense, we believe this to be well worth the effort. Double etching provides increased detail and makes removal from the carrier tree cleaner and easier. We recommend that you handle our photo-etch parts with a tweezer (finger prints can create tarnished surfaces over time) and dab a drop of Tamiya Clear over the part after installation.

Reference Material for Building:

Der Erfolgstyp, 911 GT1 1997
by: Ulrich Upietz ISBN 3-928540-18-1
Available through Classic Motorbooks

Racer Magazine, Issue#: 60
1-800-999-9718

Up Close & Mechanical Team Rohr
Issue #1 June 1998 by: Scale Motorsport
Sku#: 9111 Price \$10.00US + shipping

1996 Porsche 911 GT1

1. Front Tow Hook replaces Tamiya part A13. Paint Tamiya clear red.
2. Fuel Fillers. Place on body work front hood below windshield.
3. Oil Tank Cap either place on top of Tamiya part B6 or replaces B6.
4. Mirrors replace Tamiya part B24.
5. Computer Electrical Box. See Insert # 3.
6. Wing Endplates replaces C5 and C6.
7. Front Hood Fasteners.
8. Radiator Grill placed on part A24 right side (tow hook side).
9. Radiator Grill placed on part A24 left side.
10. Radiator Grill placed on part C18.
10. You have 2 number 10's (our screw up). This one, the gear lever escutcheon plate, goes on firewall where gear lever passes through part A23.
11. Door Light Plates.
12. Wickerbill.
13. Engine Badges
14. Passenger's Side Floor Framework. See Insert # 3.
15. Driver's Side Floor Framework. See Insert # 3.
16. Driver's Side Floor Framework. See Insert # 3.
17. Headlight Rings, place on part D4.
18. Rear Shock End Caps only for use with Scale Motorsport Turned Metal Package sku# 9112.
19. Hub Rings place on parts A6 and A7.
20. Kill Switch, place on front hood by windshield. Paint Tamiya clear red.
21. Dashboard detail on part A15.
22. Drink Cup Holder. See Insert # 3.
23. Rear Bodywork Mounting Clips, replaces A18.
24. Hood Emblem.
25. Passenger-Side Dash-mounted ID Plate replaces Tamiya part C1.
26. Digital Sign Marker, passenger door window.
27. Wheel Locks.
28. Hood Pins.
29. Hood Fastening Plates.
30. Left Foot Pedal place on part C7.
31. Right Foot Pedal place on part C7.
32. Bodywork Clips.

Scale Motorsport

3 Topside Lane
Newtown, CT 06470-2023

Phone: 203.426.9686
Fax: 203.426.1397
Email: scalemotor@aol.com
www.scalemotorsport.com
©Scale Motorsport 1999



This kit is not a toy, it is designed for the advanced builder or intermediate modeller interested in learning new techniques while expanding their modelling skills. Not safe for children under the age of 12 years.

Porsche, The Porsche Shield And The Distinctive Design of Porsche Cars Are Trademarks And Trade Dress of Porsche AG. Permission Granted

Production Notes:

Not all photo-etch products are created equal. Scale Motorsport photo-etch sheets are double etched from nickel-plated steel. In order to accomplish double etching, artwork and tooling costs double in time and expense, we believe this to be well worth the effort. Double etching provides increased detail and makes removal from the carrier tree cleaner and easier. We recommend that you handle our photo-etch parts with a tweezer (finger prints can create tarnished surfaces over time) and dab a drop of Tamiya Clear over the part after installation.

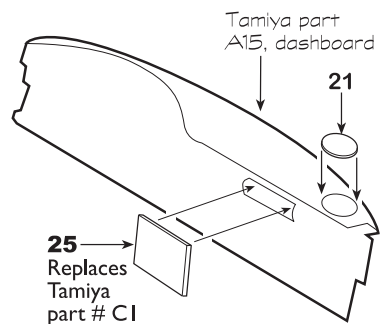
Reference Material for Building:

Der Erfolgstyp, 911 GT1 1997
by: Ulrich Upietz ISBN 3-928540-18-1
Available through Classic Motorbooks

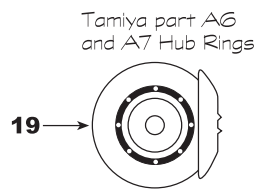
Racer Magazine, Issue#: 60
1-800-999-9718

Up Close & Mechanical Team Rohr
Issue #1 June 1998 by: Scale Motorsport
Sku#: 9111 Price \$10.00US + shipping

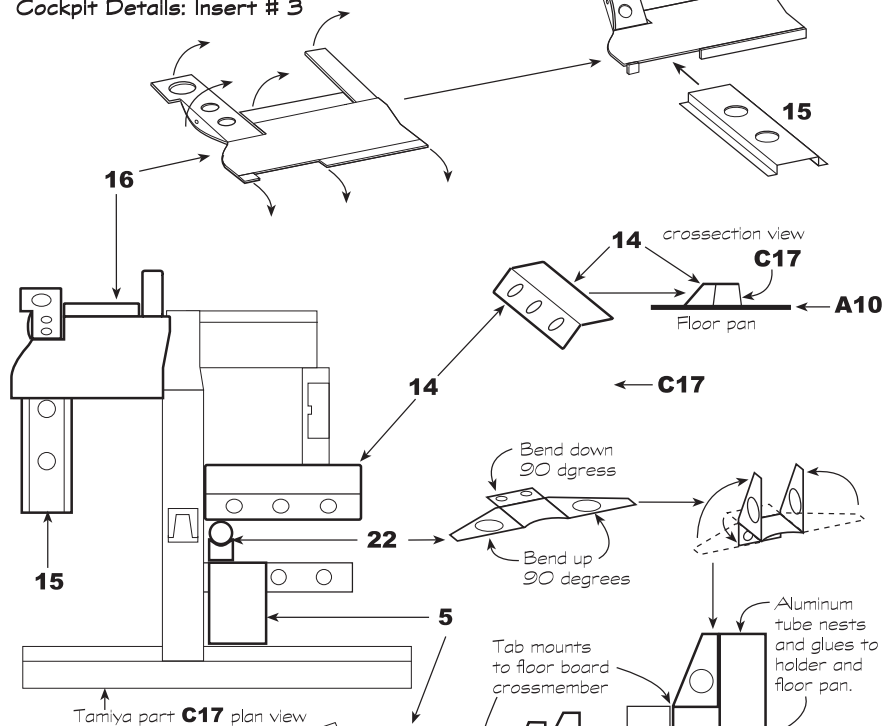
Dashboard Details: Insert # 1



Brake Rotor Details: Insert # 2



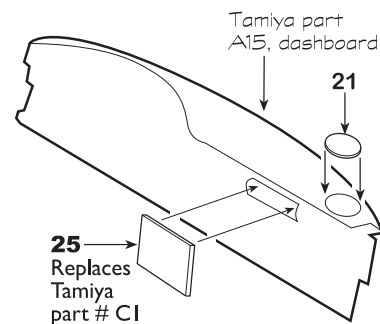
Cockpit Details: Insert # 3



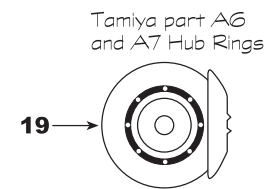
Computer Box Construction Sequence

1. Fold all flaps 90 degrees
2. Fold top and sides 90 degrees and glue to flaps
3. Glue bottom flaps to floor

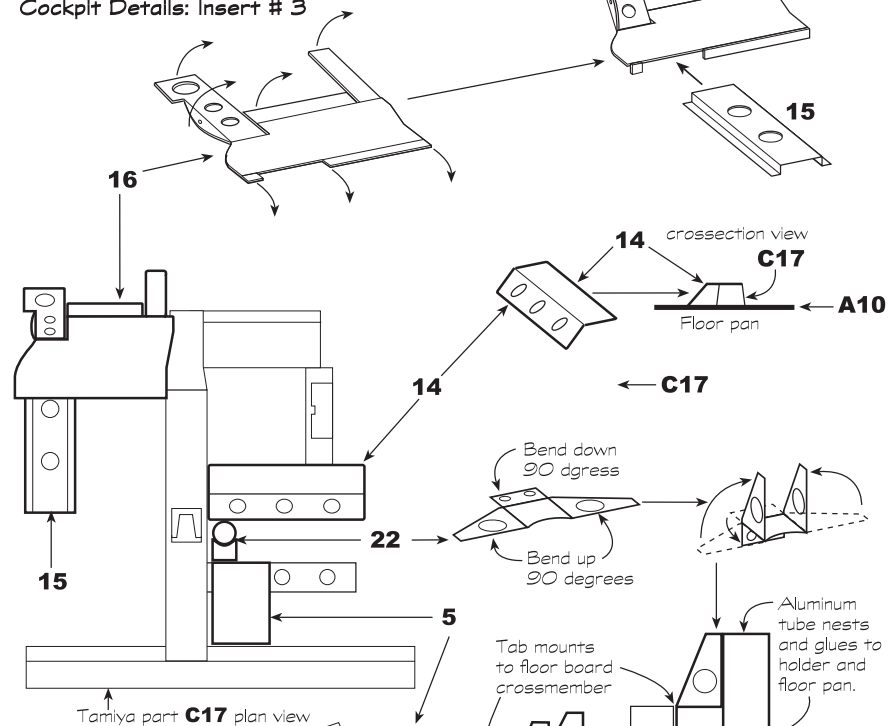
Dashboard Details: Insert # 1



Brake Rotor Details: Insert # 2



Cockpit Details: Insert # 3



Computer Box Construction Sequence

1. Fold all flaps 90 degrees
2. Fold top and sides 90 degrees and glue to flaps
3. Glue bottom flaps to floor